

## **SOBHA Hartland 2 Skyscape Avenue**



Screenshot\_6

**Objektnummer: 2024-00478**

**Eine Immobilie von SAQURA Immobilien GmbH**

## Zahlen, Daten, Fakten

<b>Art:</b>	Wohnung - Etage
<b>Land:</b>	Vereinigte Arabische Emirate
<b>PLZ/Ort:</b>	Dubai
<b>Wohnfläche:</b>	135,26 m <sup>2</sup>
<b>Nutzfläche:</b>	145,02 m <sup>2</sup>
<b>Zimmer:</b>	4
<b>Bäder:</b>	3
<b>Balkone:</b>	2
<b>Kaufpreis:</b>	1.008.637,00 €

## Ihr Ansprechpartner

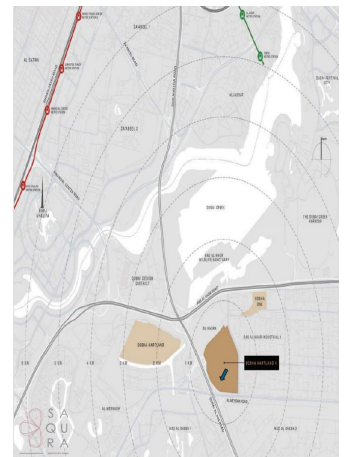
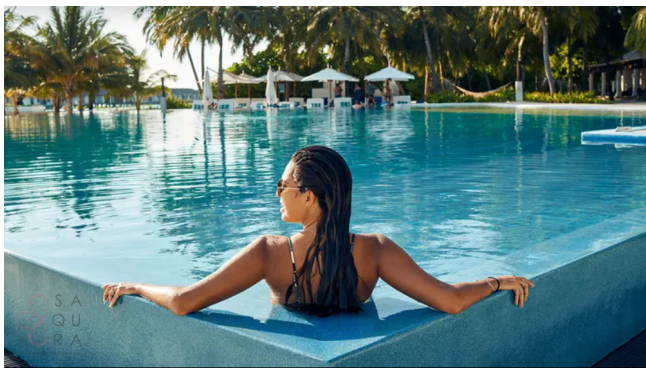
### **SAQURA Team**

SAQURA Immobilien GmbH  
Riesgasse 3/14  
1030 Wien

T +43 6677639102 102

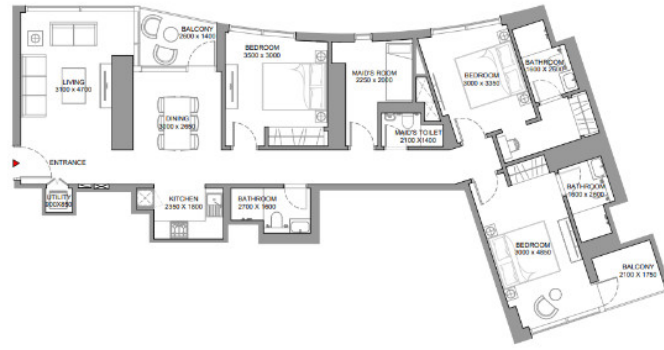
Gerne stehe ich Ihnen für weitere Informationen oder einen Besichtigungstermin zur Verfügung.





**3 BEDROOM APARTMENT**  
**TYPE A (with maid room + balconies) VARIANT 1**

**TOTAL SALEABLE AREA**  
 SUITE = 1,456.25 SQ.FT.  
 BALCONY = 105.59 SQ.FT.  
 TOTAL = 1,561.84 SQ.FT.



List of unit numbers with this unit plan:

**VIEWS A**  
 Legions Community, Nad Al Sheba, Amenities  
 E806, E807, E808, E809, E810, E811, E812, E813, E814, E815, E816, E817, E818, E819, E820

**VIEWS B**  
 All dimensions are in metric, measured to wall finishes. 2. All materials, dimensions & drawings are approximate. 3. Information is subject to change without notice, at developer's absolute discretion. 4. Actual areas may vary from the stated area. 5. Drawing are not to scale. 6. All images used are for illustrative purposes only and do not represent the actual site. 7. The developer reserves the right to make revisions/alterations, at its absolute discretion, without any liability whatsoever.