

SOBHA Hart Land 2 SkyScape Avenue



Objektnummer: 2024-00475

Eine Immobilie von SAQURA Immobilien GmbH

Zahlen, Daten, Fakten

Art:	Wohnung - Etage
Land:	Vereinigte Arabische Emirate
PLZ/Ort:	Dubai
Wohnfläche:	67,11 m ²
Nutzfläche:	72,75 m ²
Zimmer:	2
Bäder:	2
Balkone:	1
Kaufpreis:	456.293,00 €

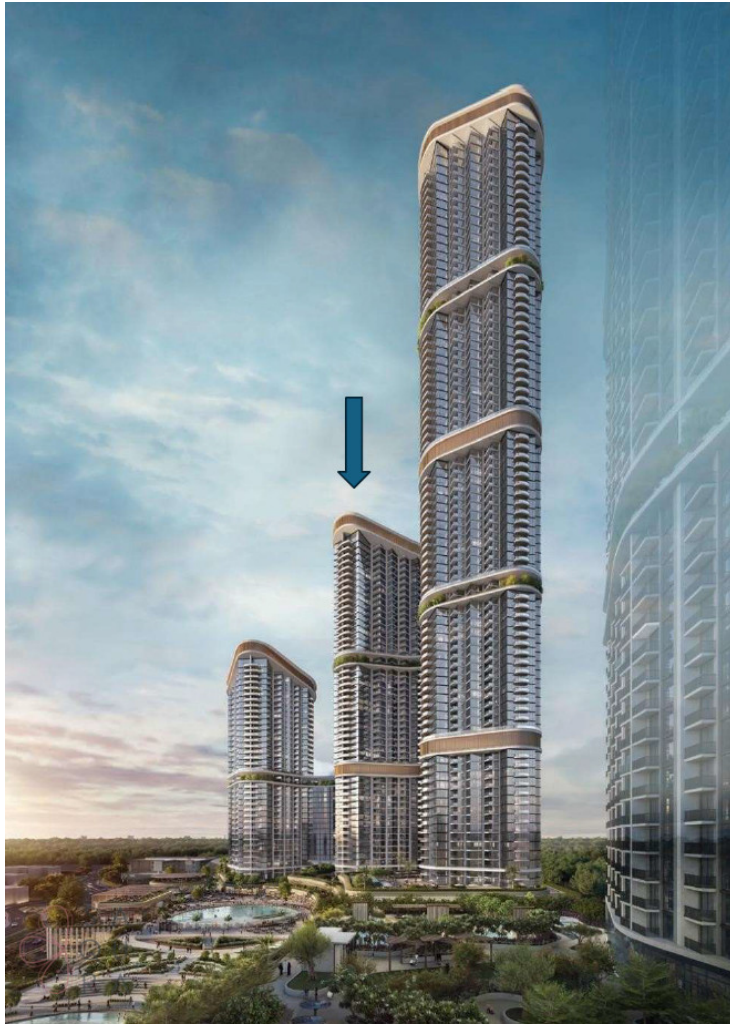
Ihr Ansprechpartner

SAQURA Team

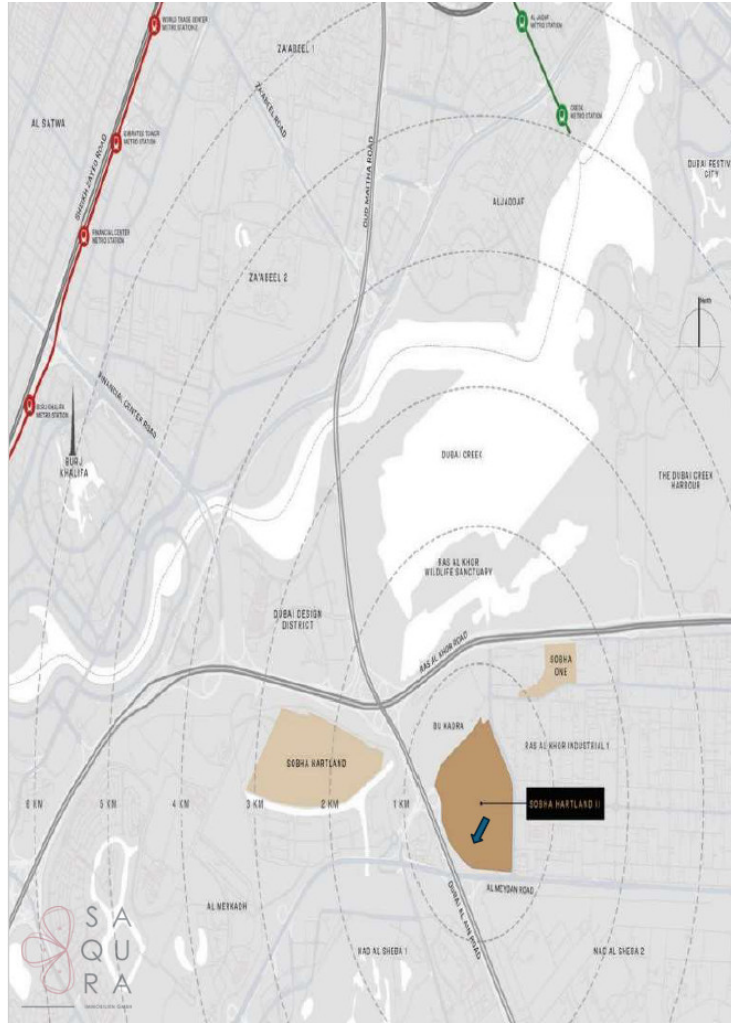
SAQURA Immobilien GmbH
Riesgasse 3/14
1030 Wien

T +43 6677639102 102

Gerne stehe ich Ihnen für weitere Informationen oder einen Besichtigungstermin zur Verfügung.







Objektbeschreibung

Sobha Hartland II brings forth a beautiful blend of an opulent and sustainable waterfront lifestyle. Immerse yourself in the tranquility of blue lagoons and beachfronts amidst the buzz of a bustling city. Chase the sunset as you take a jog along the boardwalk and stroll down the blue lagoons. Discover your tribe at Sobha Hartland II in a vibrant community surrounded by endless possibilities for various activities. Forge new connections as you appreciate the finer aspects of living, while attuned to the serenity of nature. Build your ties at your own pace as you journey through the tides of time. At Sobha Hartland II, nature's splendor blooms in vibrance. Luxuriate in the privacy of a gated community surrounded by a sparkling beachfront and lush greenery- an experience that transcends beyond the ordinary. Watch the magic unfold when elevated living spaces blend in seamlessly with the beauty of nature, in form and function. Introducing Skyscape Avenue, where luxury living meets unparalleled vistas. Perched atop the city skyline, this residential tower redefines urban elegance with its breathtaking views, deluxe amenities, and expansive apartments. Experience a lifestyle of refinement and grandeur, where every moment is framed by the spectacular panorama of the cityscape. Welcome to a world where luxury meets the sky. Welcome to Skyscape Avenue. 1.5 BEDROOM APARTMENT 1415 TYPE C (with study room, powder room + balcony) SUITE: 67.11 m2 BALCONY: 5.64 m2 TOTAL: 72.75 m2 WHERE THE SKY MEETS THE CITY AND DREAMS TAKE FLIGHT Skyscape Avenue takes inspiration from the celestial canvas above, capturing the dynamic essence of city life within its name. It symbolizes our dedication to harmonizing architectural excellence with nature's grandeur. Here, "skyscape" epitomizes our vision for a living environment that embodies boundless horizons and infinite potential. Skyscape Avenue offers residents with choice of 1, 1.5, 2, 2.5 & 3 bed homes, offering an extraordinary vantage point above the city skyline. Each residence features expansive windows that frame panoramic views, providing a constant connection to the surrounding landscape. Skyscape Avenue epitomizes urban luxury with its sleek design and premium finishes, setting new standards of sophistication. From the opulent lobby to the serene waterfront terrace, every corner exudes unparalleled comfort and indulgence. Experience waterfront living at its finest in the heart of the Sobha Hartland - II. EVERY HORIZON TELLS A NEW STORY At Skyscape Avenue, every horizon unveils a new chapter waiting to be explored. From the expansive windows of your residence, witness the captivating city skyline that stretches out before you. Marvel at iconic landmarks silhouetted against the changing colors of the sky, providing a dynamic backdrop that evolves throughout the day. A TESTAMENT TO THE VIBRANT PULSE OF THE CITY The panoramic views encompass a tapestry of urban life, showcasing bustling streets, architectural wonders, and natural landscapes harmoniously integrated into the cityscape. Whether it's the glittering lights of downtown after sunset or the serene morning fog rolling over the horizon, each scene invites you to immerse yourself in the narrative of city living. EMBRACE THE SERENITY OF WATERFRONT LIVING Luxury intertwines seamlessly with the serenity of waterfront living, offering a sanctuary where opulence meets tranquility. Embrace the gentle lull of waves and breathtaking views, enveloped in an ambiance of refined indulgence. Here, every moment is a symphony of luxury; echoing the serene rhythm of waterfront life. A SANCTUARY OF

TRANQUIL WATERS AND ENDLESS HORIZONS The views awaken a profound sense of serenity, where tranquil waters and endless horizons evoke a sublime calmness. Each vista whispers tales of peace, inviting the soul to bask in the gentle embrace of nature's tranquility. In this sanctuary of beauty, every gaze is a journey into the depths of serene bliss.